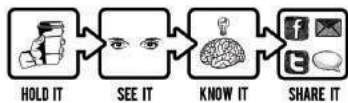
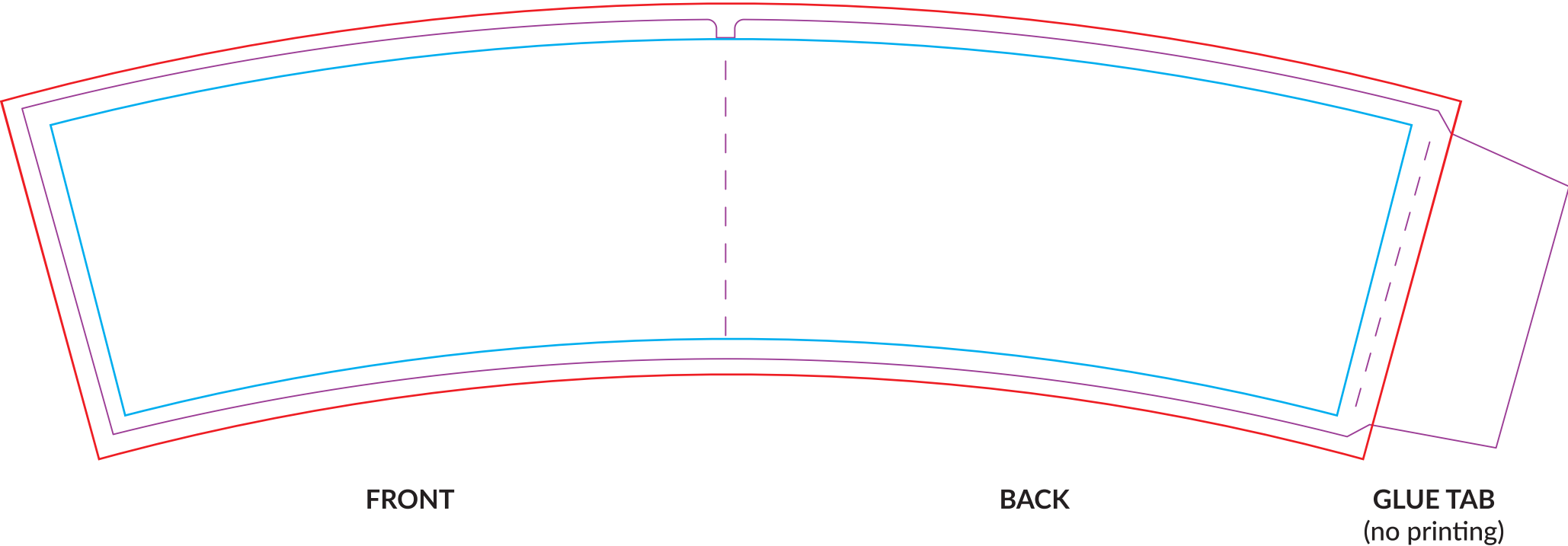


- Create in Adobe **I**llustrator in CMYK and save as .ai or .pdf.
- Work in layer labeled ARTWORK.
- **A**ll logos and artwork must be vector.
- Any linked graphics must be embedded.
- Package **a**ll fonts or turn type to outlines.
- Avoid using serif, delicate script, or ornate typefaces for reverse type at small sizes.
- 6 colors maximum. Create a spot color swatch for each color and name as PMS number.
- Place art within this artboard. A 17% arc will be added in prepress to accommodate the shape of the sleeve. Some distortion may occur.

- **SAFETY ZONE.** Keep important text and logos inside this line.
- **DIE LINE.** Where the sleeve will be trimmed.
- **BLEED.** Extend background art to this line.

Proof Sample - For Layout and Arc Reference



Proof created on:



Please note that this rendering is a graphic representation used to showcase the layout and sizing of your image on our material options. Finished products may look different than the image shown above.